

Trade Selection by Belimo



Manual Handle and Worm Gear for Butterfly Valves

Applications

For manually operating D6... , EXT-D6... series butterfly valves.

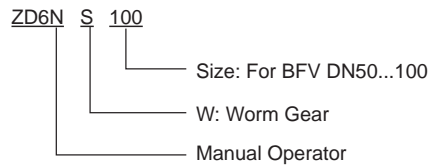
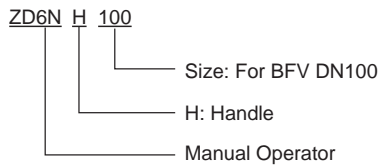


Technical data

Materials

Worm Gear	Gear train	Ductile cast iron and steel gear sets	
	Housing	ZD6N-S100~ZD6N-S250	Cast Aluminium
		ZD6N-S300~ZD6N-S600	Cast Iron
	Shaft	Steel 45	
	Hand wheel	Cast iron	
Handle	ZD6N-H100~ZD6N-H150		Cast Aluminium
Stop Plate	Steel		

Ordering sample



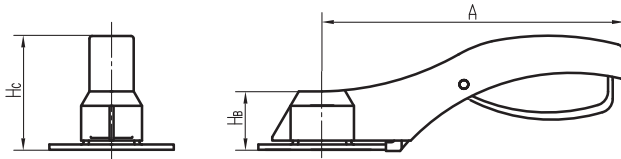
Combination table

	D650N(L)	D665N(L)	D680N(L)	D6100N(L)	D6125N(L)	D6150N(L)	D6200W(L)	D6250W(L)	D6300W(L)	D6350N(L)	D6400N(L)	D6450N(L)	D6500N(L)	D6600N(L)
ZD6N-H100														
ZD6N-H150														
ZD6N-S100														
ZD6N-S150														
ZD6N-S200														
ZD6N-S250														
ZD6N-S350														
ZD6N-S400														
ZD6N-S450														
ZD6N-S500														
ZD6N-S600														

Suitable combination

Dimensions [mm]

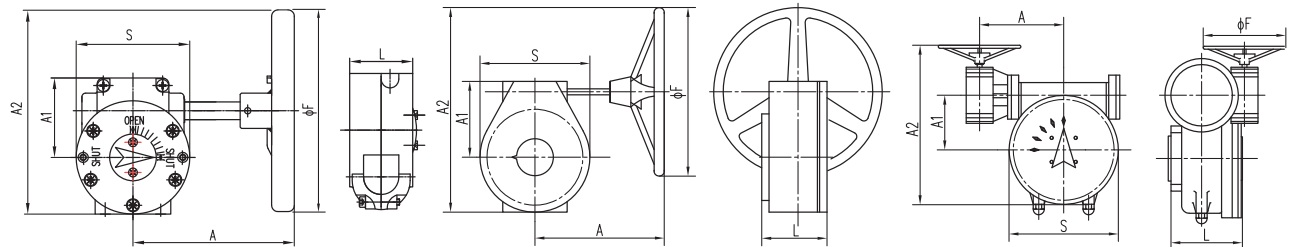
Manual Handle



ZD6-H100~ZD6-H150

Type	Top Flange	Dimensions [mm]			Weight (kg)
		A	H _B	H _C	
ZD6N-H100	F05, 14x14	170	32	64	0.50
ZD6N-H150	F07, 17x17	260	37	75	0.65

Worm Gear



Single-stage Worm Gear
ZD6N-S100 ~ ZD6N-S350

Single-stage Worm Gear
ZD6N-S400 ~ ZD6N-S450

Double-stage Worm Gear
ZD6N-S500 ~ ZD6N-S600

Type	Top flange	Dimensions [mm]						Speed Ratio	Weight (kg)
		A	A1	A2	L	S	øF		
ZD6N-S100	F05, 14x14	164.5	76	170	71	107	146	24:1	4.6
ZD6N-S150	F07, 17x17	164.5	76	170	71	107	146	24:1	4.6
ZD6N-S200	F07, 17x17	229	97	153	78	146	285	30:1	10.5
ZD6N-S250	F10, 22x22	229	97	153	78	146	285	30:1	10.5
ZD6N-S350	F10, 22x22	228	113	301.5	82	160	285	50:1	11.8
ZD6N-S400	F14, 36x36	260	155	439.5	98	254	385	80:1	16.5
ZD6N-S450	F14, 36x36	260	155	439.5	98	254	385	80:1	21.8
ZD6N-S500	F14, 36x36	280	110	390	124	220	285	560:1	34.5
ZD6N-S600	F16, 36x36	306	136	442	129	272	385	560:1	49